

All Stars Childcare ^{ltd}

Bright from the start!



Information Pack

Providing high quality care and early education from birth to school age.

April 2019



A member of the National Day Nursery Association and supported by the Education and Training Network

Dear Parent / Carer

Welcome to **All Stars Childcare**

Here at **All Stars Childcare** we are passionate about providing quality Early Years Education and the highest standards in care and safety.

Enclosed you will find our information pack which includes details of our facilities, hours, educational framework and example of our daily routine, menus and fees.

We hope you find this information helpful however, if you have further questions regarding the care of your child, please do not hesitate to contact us. We'd love to meet you!

You can telephone us on: 0113 257 2140 or email us at lisasutcliffe@allstarschildcareltd.co.uk.

Also, please have a look at our website (www.allstarschildcareltd.co.uk), our Facebook page (search: All Stars Childcare) or follow us on Twitter (@astarschildcare) to see how we have developed our nursery.

Finally from all of us at **All Stars Childcare**, we thank you for your valued interest and we hope to see you soon.

Yours sincerely

Lisa Sutcliffe
Nursery Manager

Sarah Christopher
Deputy Manager

Opening Hours

Full Day	7:30am	6:00pm
Morning Session	7:30am	12:30pm
Afternoon Session	12:30pm	6:00pm

The nursery is open 51 weeks of the year. We are closed on statutory bank holidays and during the period between Christmas and the New Year.

We have the Baby suite for children aged from 3 months to 18 months.



Stages*

Twinkles	Sparkles	Super Stars	Bright Stars
(18 months – 2 ½ years)	(18 months – 2 ½ years)	(2 ½ – 5 years)	(2 ½ – 5 years)

*Our nursery is currently planning to operate in accordance with the above 4 stages but this may vary dependent on our demand and the individual development needs of our nursery children.

Sessions

Morning Session

Includes breakfast, a mid-morning snack and hot lunch. Children take part in indoor/outdoor activities.

Afternoon Session

Includes mid-afternoon snack and a light tea. Children take part in indoor/outdoor activities.

Free Early Education Entitlement (Universal)

All three and four year old children are entitled to 15 hours free nursery education. This applies until they reach compulsory school age (the term following their fifth birthday). All Stars Childcare are able to provide these FREE sessions.

30 hours

Stretched care: 22 hours of funded childcare per week over a period of 51 weeks of the year.

To gain advice about your eligibility and how to claim, please access the Leeds City Council website by following the link below:-

<http://familyinformation.leeds.gov.uk/families/pages/3-and-4-year-old-FEEE.aspx>

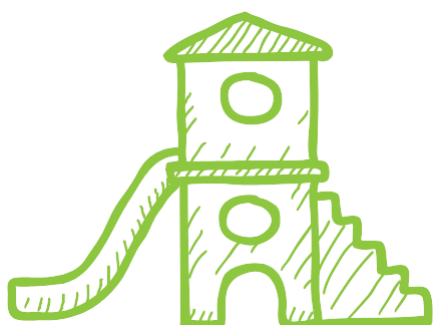
It is a joint responsibility (ours and yours) to apply for funding. You need to apply for the additional funding on the HMRC website and you need to refresh the 11 digit code every 3 months.

All Stars Childcare also provide free places for 2 year olds. For more information and to see if you are eligible for these places please contact our Nursery Manager Lisa on 0113 257 2140.

Facilities

At All Stars Childcare we offer a range of facilities which create a comfortable, safe and stimulating environment where we deliver a high standard of care and early education.

Our onsite nursery cook provides children with delicious healthy homemade meals and nutritious snacks throughout the course of the day. We try to accommodate all dietary requirements throughout our nursery menus.



All Stars Childcare provides outdoor and indoor play areas allowing children to explore both environments. Activities are planned for both play areas using age appropriate resources and allow for spontaneous learning and play in order to respond to your child's own development needs.

Our changing area allows staff to tend to the personal care of babies and younger children. The toileting area is equipped with junior toilets and low level wash basins to help children gain independence as they develop their own personal care skills.

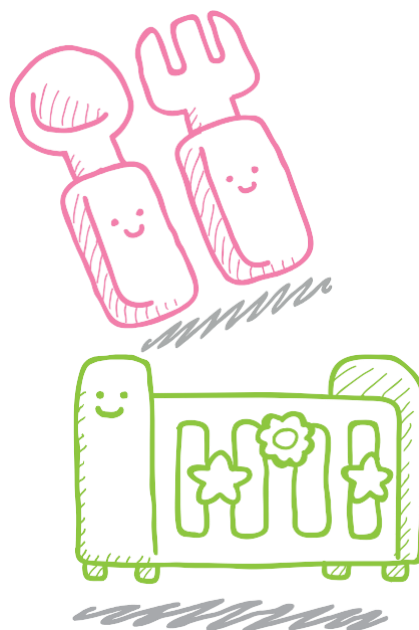


Educational Framework and Daily Routine

Our aim is to help each child gain confidence and independence and to make learning fun. All Stars Childcare provides activities based around the Early Years Foundation Stage (EYFS). This is an educational framework for children from birth to 5 years old. Your child's skills and progress will be monitored throughout their time at nursery by their Key Person. They will create a profile and record your child's development with written observations and photographs.

Example of Daily Routine

7.30am	Registration, welcome and free play
8.00am	Breakfast
8.30am	Circle time
8.45am	Indoor / outdoor play
9.45am	Hand wash/snack time
10.00am	Planned activity
11.00am	Toilet / hand wash
11.15am	Circle time
11.30am	Lunchtime
12.15pm	Nap time / quiet play
1.15pm	Indoor / outdoor play
2.00pm	Hand wash / snack time
2.15pm	Planned activity
3.15pm	Toilet / hand wash
3.30pm	Circle time
3.45pm	Tea time
4.30pm	Free play / home time



*We aim to mirror your child's individual routine where possible.

Examples of Weekly Meals

Week 1

	Lunch	Tea
Monday	Lasagne & Sweetcorn or Peas Quorn Mince (V) Yoghurt	Soup with Wholemeal Bread (V)
Tuesday	Fish Pie & Mixed Vegetables Vegetable Pie (V) Fruit Crumble & Custard	Crumpets (V)
Wednesday	Chicken Supreme with Brown Rice Quorn Chicken (V) Yoghurt	Cheese on Toast (V)
Thursday	Tuna & Vegetable Pasta Bake (V) Semolina	Homemade Sausage Rolls Cheese rolls (V)
Friday	Bombay Potato Curry (V) Ice cream & Wafer	Sandwiches with a variety of fillings (V)

Week 2

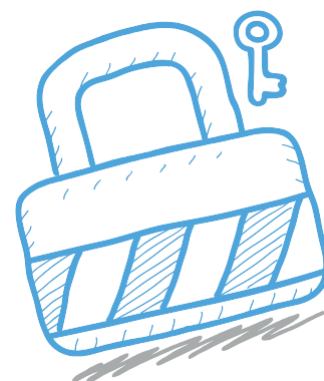
	Lunch	Tea
Monday	Omelette & Beans (V) Coconut Jam Sponge & Custard	Tuna & Cheese Melts (V) Cheese Melts (V)
Tuesday	Sausage, Mini Roast Potatoes with Cauliflower Cheese Quorn Sausage (V) Orange & Apricot loaf	Filled Jacket Potato (V)
Wednesday	Tuna & Cheese Pasta Bake Cheese Pasta Bake (V) Bananas & Custard	Spaghetti Hoops & Toast (V)
Thursday	Mushroom Risotto (V) Semolina	Oriental Spiced Noodles (V)
Friday	Chicken Curry & Nan Breads Quorn Chicken (V) Ice cream & Wafers	Pitta Bread Pockets with Shredded Chicken & Sweetcorn in mayonnaise Quorn Chicken (V)

Week 3	Lunch	Tea
Monday	Chilli & Brown Rice (V) Fruit Loaf	Tuna & Cheese Melts (V) Cheese Melts (V)
Tuesday	Sweet & Sour Chicken & Noodles Quorn Chicken (V) Chocolate Delight	Sandwiches with a variety of fillings (V)
Wednesday	Spaghetti Bolognese & Garlic Bread Quorn Mince (V) Yoghurt	Quiche (V)
Thursday	Fish & Vegetable Risotto (V) Sultana Sponge & Chocolate Custard	Soup & Crusty Bread (V)
Friday	Macaroni Cheese with Wholemeal Bread (V) Rice Pudding	Spaghetti Hoops & Toast (V)

Please advise us of any dietary requirement prior to your child(ren)s start date

Security

- ★ Our building and outdoor play areas are regularly checked to maintain safety and security.
- ★ The door will only be opened by a staff member.
- ★ Our outdoor area is secure, fully enclosed by a fence around the perimeter and children are always supervised.
- ★ Children will not be permitted to leave the premises with anyone who is not known to our nursery staff. Full details are explained in our Nursery policies which you will receive upon enrolment.
- ★ Close circuit TV (CCTV) operates in all childcare areas of the nursery



Formula Milk

We ask parents/ carers to provide their own formula milk and sterilised bottles each day; all clearly marked with the child's name. Staff will then make up the milk fresh as required.



Nappies

Nappies are not included in our fees as most of our customers prefer to supply their own. Wipes are included.

Fees (from 1st April 2019)

Nursery Fees

Morning Session (7:30am–12:30pm)	£33.75
Afternoon Session (12:30pm–6:00pm)	£34.25
Full Day (7:30am–6:00pm)	£51.80
Full Week	£259.00

Extras

Additional Hourly Rate (without meals)	£9.20
Lunch	£4.00
Tea	£1.80

VAT is not chargeable.

We will always try to be as flexible as possible aiming to meet the ever changing needs of parents / carers. Fees normally include all meals, snack and drinks. Sibling discounts are offered at 5% please enquire for more details. Baby wipes are provided. Formula milk and any specialised care / nappy products should be provided by parents / carers.

Childcare Vouchers

All Stars Childcare accepts childcare vouchers which can be used to pay towards your childcare fees. Please let us know as soon as possible which vouchers you wish to use as we may need to register with the providing company first. This should avoid delays and allow you to use the vouchers for your first payment of fees. Childcare vouchers also need to be in the account no later than the 1st of each month.

Settling-in Sessions

Before your child is due to join us we will contact you to arrange some settling in sessions which will take place a few weeks before your child's planned start date.

We will invite both yourself and your child to attend the initial settling in session which will last for around 1 ½ hours. This session is an opportunity for you to meet and get to know your child's designated key person. Further settling-in sessions are booked to be as flexible as possible and allow your child to meet other team members and our other nursery children. We aim to create a positive transition to our nursery for parents / carers as well as the children.

Payment Terms and Conditions (Summary)

All fees are due one month in advance on the 1st of each month. Children are not accepted unless the fees are fully paid.

Full fees are payable for the weeks shortened by bank holidays and days declared a national holiday. (NB. Our fees have been calculated on a 51 week basis: Full Time (£259.00 x 51 weeks / 12 months = £1100.75 a month).

Full fees are also payable for family holidays and a child's sickness.

We accept a variety of child care vouchers and we offer Early Education Entitlement sessions for 2 year olds as well as 3 – 4 year olds.

A registration fee of £50 is payable on receipt of the registration form.

We hope to have the opportunity to look after your child(ren). If you would like to register with us and guarantee a place, please complete the enclosed Registration Form and return to us as soon as possible with your £50 registration fee.

Arc House
1 Coal Hill Lane
Farsley
Leeds
LS28 5N

April 2019



T: 0113 257 2140

E:



enquiries@allstarschildcareltd.co.uk www.allstarschildcareltd.co.uk